

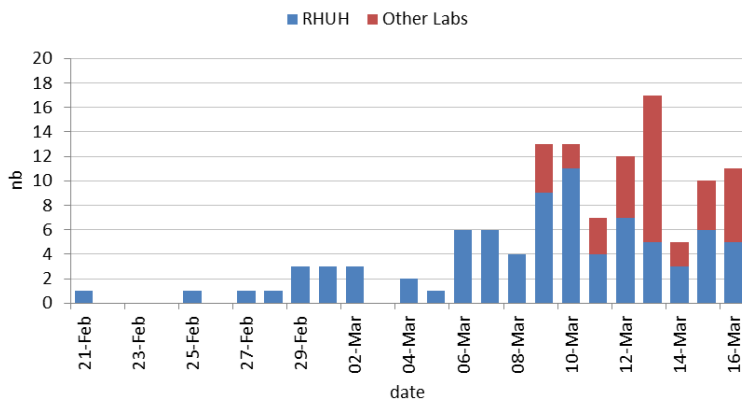
“This is a time for prudence, not panic. Science, not stigma. Facts not fear.”
UN Secretary General, 13 March 2020



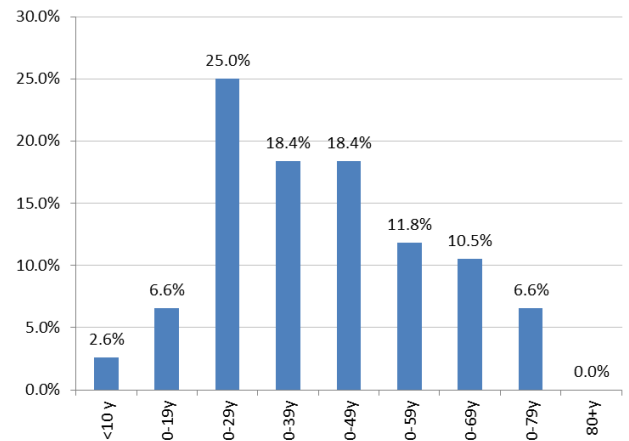
Figure 1. Countries affected by COVID-19 outbreak globally 17 March 2020 as per WHO dashboard

LEBANON COVID-19 statistics as of 17 March 2020 3:00 pm		Regional updates		Global update	
Positive cases	120 (11 New)	Total cases	18,019 (1,385 new)	Globally cases	173,344 (8,507 new)
Total clinical recovery *	10	Total Deaths	870 (1 new)	Cases reported from	152 countries (6 new)
Total recovery**	3	Countries infected	18 countries	Total deaths	7,019 (549 new) (CFR: 3.4%)
Total Deaths	3	Cases by country today	1,385	Confirmed cases in China	81,116 (39 new)
Call Centre	2180 (150 New)	<i>Iran 1,178, Jordan 16, Morocco 1, Bahrain 8, Kuwait 7, Lebanon 11, Qatar 64, Occupied Territories 2, Pakistan 134 and Tunisia 4.</i>			
Call Centre Referrals to RHUH	183 (9 New)	Deaths by country today	137	Cases outside China	86,438 (13,874)
		<i>Iran 135, Morocco 1 and Iraq 1.</i>		Death outside China	3,388 (848 new)
* Clinical Recovery: Patients no longer showing clinical signs and symptoms					
** Recovery: Patients clinically recovered and testing negative on 2 consecutive PCR tests					

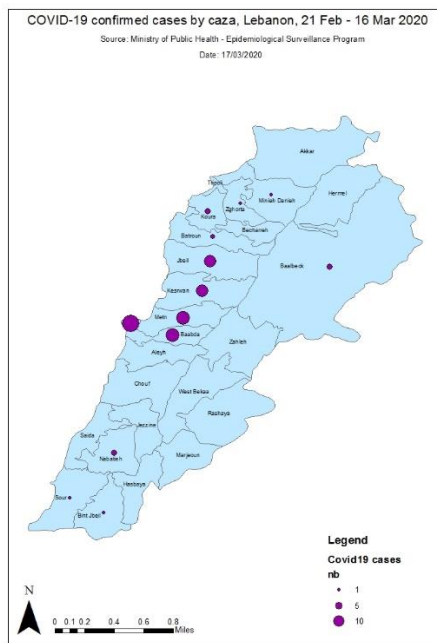
Distribution of COVID-19 cases as reported by the epidemiological surveillance unit at MOPH



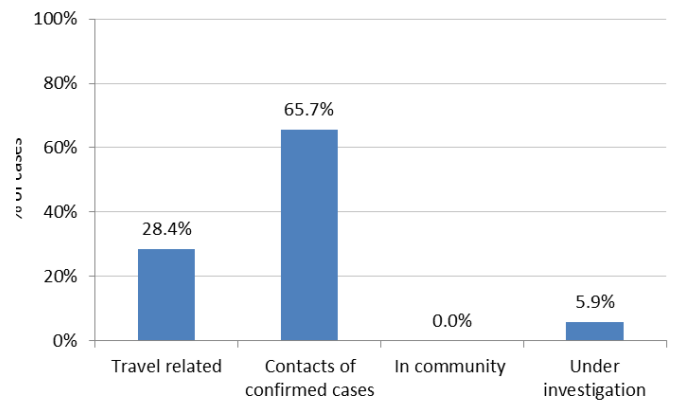
Graph 1: Distribution of COVID-19 cases by date of confirmation



Graph 2: Distribution of COVID-19 cases by age



Graph 3: Distribution of COVID-19 cases by place of residence



Graph 4: Distribution of COVID-19 cases by source of infection

Your questions answered

Use of therapeutic drugs in context of COVID-19

There is increasing concern in the misuse of therapeutic agents to COVID-19 patients. Some repurposed drugs are prescribed (or ones available in market) given to mild or not even confirmed cases, including some anti-inflammatory drugs. This is a very concerning situation since there are currently no WHO approved therapeutic agents available for COVID-19. Another concern is the adverse effect of using such repurposed drugs as well as drug interactions between different types of medications. If a country or hospital decides to apply the compassionate use of therapeutics, they are strongly encouraged to register and enroll in the clinical trials. This message has been delivered to each respective government through our WHO country office for further consideration.



New guidelines

Technical Areas of Work	Reference/attachment
Case Management	<p>Clinical management of SARI guideline* and home care guidelines are available at: https://www.who.int/emergencies/diseases/novel-coronavirus-2019/technical-guidance/patient-management</p> <p>Clinical characterization for hospitalized cases: case report form is available at: https://www.who.int/emergencies/diseases/novel-coronavirus-2019/technical-guidance/early-investigations</p> <p>Master Protocol for Clinical Trials: https://www.who.int/blueprint/priority-diseases/key-action/multicenter-adaptive-RCT-of-investigational-therapeutics-for-COVID-19.pdf?ua=1</p> <p>Clinical management of SARI guideline in Arabic is attached</p>
Infection Prevention and Control	<p>Guidance on healthcare worker risk assessment, considerations for quarantine, rational use of PPE, advice on the use of masks, IPC during healthcare of suspected, home care IPC, WASH, local production are available at: https://www.who.int/emergencies/diseases/novel-coronavirus-2019/technical-guidance/infection-prevention-and-control</p> <p>Training package is available online (see training section). PPT presentation is available upon request.</p> <p>Guidance for IPC during healthcare of suspected cases in Arabic is attached.</p>
Trainings for COVID-19	<p>Emerging respiratory viruses, including COVID-19: methods for detection, prevention, response and control: https://openwho.org/courses/introduction-to-ncov</p> <p>Critical Care Severe Acute Respiratory Infection Training: https://openwho.org/courses/severe-acute-respiratory-infection</p> <p>ePROTECT Respiratory Infections (for all personnel responding to outbreaks): https://openwho.org/courses/eprotect-acute-respiratory-infections</p> <p>Infection Prevention and Control (IPC) for Novel Coronavirus (COVID-19) https://openwho.org/courses/COVID-19-IPC-EN</p> <p>Simulation Exercise, tabletop: https://www.who.int/emergencies/diseases/novel-coronavirus-2019/training/simulation-exercise</p> <p>Public health preparedness for mass gatherings: https://extranet.who.int/hslp/training/</p>

Important numbers

- MOPH Hotline 1214
- Airport quarantine section 01-629352
- Preventive medicine center 01-843769 | 01830300
- Call Centre 76-592699
- Preventive medicine center 01-843769 | 01830300
- Call Centre 76-592699
- Epidemiological Surveillance Unit 01-614194 | 01-614196

- WHO real time [dashboard](#)
- WHO [COVID-19 page](#)
- Protect yourself ([English](#)/[Arabic](#))
- Q&A ([English](#)/[Arabic](#))
- WHO Lebanon [website](#)
- WHO Lebanon [Facebook](#) [Twitter](#) [Instagram](#)