



- WHO real time [dashboard](#)
- WHO [COVID-19 page](#)
- Protect yourself ([English/Arabic](#))
- Q&A ([English/Arabic](#))
- WHO Lebanon [website](#)
- WHO Lebanon [Facebook](#) [Twitter](#) [Instagram](#)
- WHO [online course](#) on emerging respiratory viruses, including COVID-19

Let's work together to help reduce panic and make sure that people have access to the correct information they need to ensure the health and wellbeing of themselves, their families and friends.

LEBANON COVID-19 statistics as of 13 March 2020 (8:00 pm Beirut time)

79

(6 New) Positive cases

1

Total recovery

3

Total deaths

1,682

Call center

144

Referrals to RHUH

LEBANON HIGHLIGHTS

MOPH Primary Healthcare department in collaboration with the Order of Nurses trained 51 registered nurses working in 39 primary health care centers in Beirut and Mount Lebanon and field staff from partner organizations (IMC and PU) on infection, prevention and control measures.

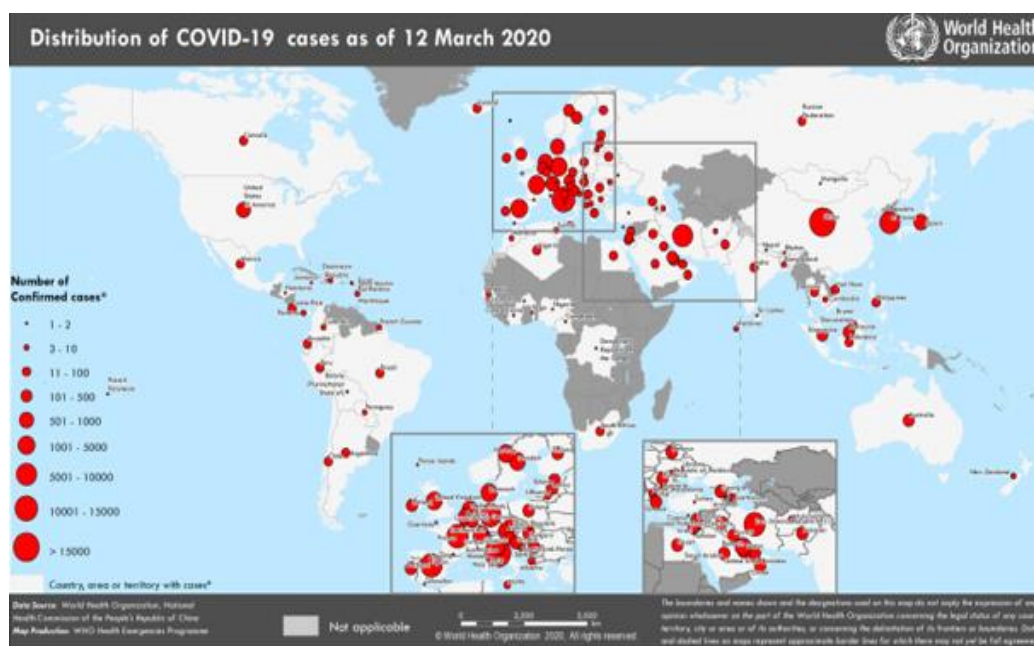


Figure 1. Countries, territories or areas with reported confirmed cases of COVID-19, 12 March 2020

Regional updates

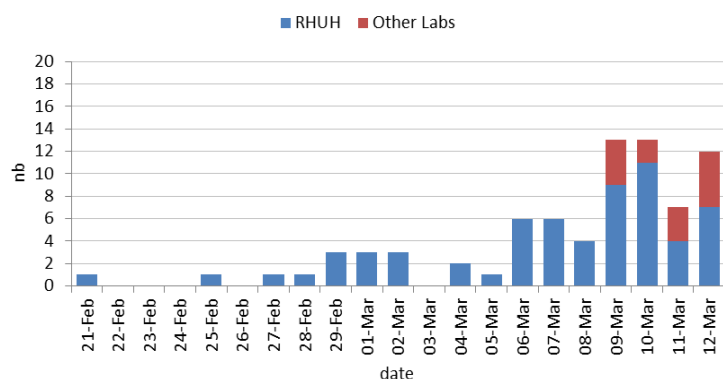
Total cases	12,370 (1,335 new)
Total Deaths	527 (86 new)
Countries infected	16 countries
Cases by country today	1,314
<i>Iran 1,287, Bahrain 2, Occupied Territories 4, Morocco 1, Pakistan 1, Saudi Arabia 17, Lebanon.</i>	
Deaths by country today	85

International updates

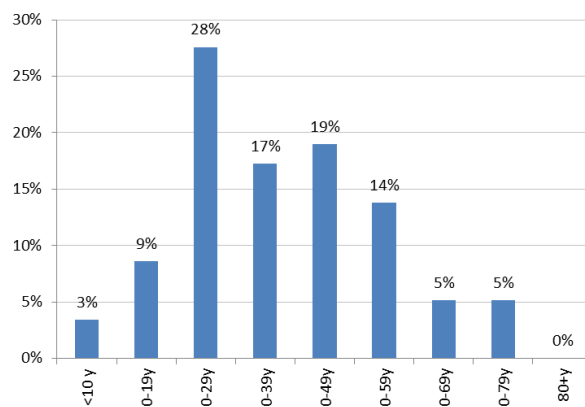
Globally cases	132,567 (8,049 new)
Cases reported from	123 countries (5 new)
Total deaths	4,947 (340 new) (CFR: 3.4%)
Confirmed cases in China	80,981 (1 new)
Cases outside China	44,067 (6703)
Death outside China	1,440 (310 new)

***Outside China, Italy is the country that has reported the highest number of deaths.*

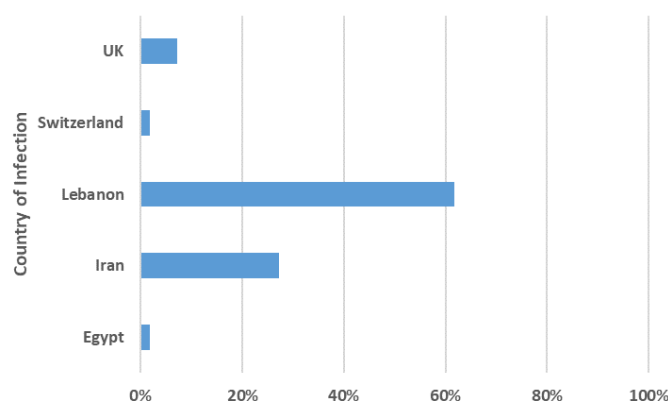
Distribution of COVID-19 cases as reported by the epidemiological surveillance unit at MOPH as of 12 March 2020



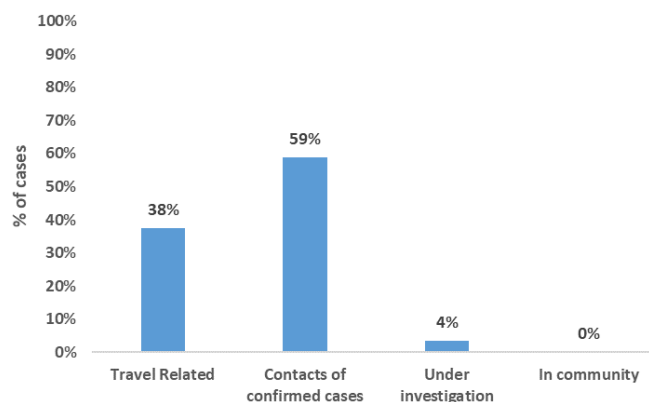
Graph 1: Distribution of COVID-19 cases by date of confirmation



Graph 2: Distribution of COVID-19 cases by age



Graph 3: Distribution of COVID-19 cases by country of infection



Graph 4: Distribution of COVID-19 cases by source of infection

SUBJECT IN FOCUS: Clinical Case Management- update

The Clinical Unit continues to convene clinicians around the globe, twice weekly by teleconference (COVID-19 Clinical Network) to share knowledge and experiences from clinicians caring for COVID-19 patients and highlight operational challenges and technical questions.

The major clinical challenge reported is the severity of the disease. A recent surge in critically ill patients requiring mechanical ventilation has strained some health systems and exhausted biomedical supplies and staff. This has highlighted the need to better support health systems become ready for such a surge in cases. Thus, the team alongside our logistic colleagues and partners are developing a Clinical Concept of Operations intended to guide countries with surge decision -making, and tools to accelerate the availability of oxygen and biomedical equipment. In addition, the Clinical unit is regularly updating other products for clinical case management:

- The updated Clinical Management Guidance for COVID-19. This will include more detailed information about the care of patients with mild and [severe illness](#), young children, pregnant and postpartum women and information about breastfeeding. To be released on 13 March 2020.
- The WHO Clinical Care Training materials continue to be available on <https://openwho.org/> This covers an approach to clinical care from pre-triage/triage, diagnosis/testing and critical care interventions, such as lung protective ventilation.
- The Global COVID-19 Clinical Data Platform continues to collect core clinical data from hospitalized patients to inform understanding of clinical natural history and severity.



From the evidence so far, the new coronavirus can be transmitted in ALL AREAS, including areas with hot and humid weather. Regardless of climate, adopt protective measures if you live in, or travel to an area reporting COVID-19. The best way to protect yourself against COVID-19 is by frequently cleaning your hands. Eliminate viruses that may be on your hands and avoid infection that could occur by then touching your eyes, mouth, and nose.



#Coronavirus #COVID19

FACT:
The new coronavirus
can be transmitted in
areas with
hot and humid climates



No. Regularly washing your bare hands offers more protection against catching COVID-19 than wearing rubber gloves. You can still pick up COVID-19 contamination on rubber gloves. If you then touch your face, the contamination goes from your glove to your face and can infect you.



#Coronavirus #COVID19

Is wearing rubber gloves
while out in public
effective in preventing
the new coronavirus
infection?



****What is the correct way to wear and dispose of masks? [VIDEO](#)**

****Beware of criminals pretending to be WHO [for more](#)**

Important numbers

- MOPH Hotline 1214
- Airport quarantine section 01-629352
- Epidemiological Surveillance Unit 01-614194 | 01-614196
- Preventive medicine center 01-843769 | 01830300
- Call Centre 76-592699

For more information Hala Habib | Communication Consultant | 03-870459 | hhabib@who.int